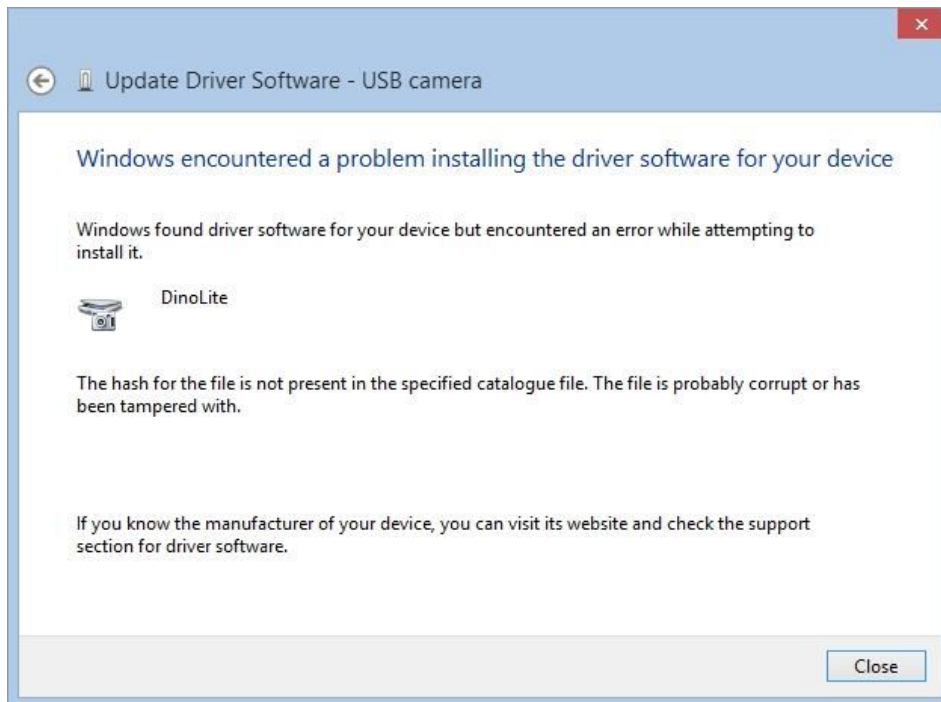



# Driver Installation Notice for Windows 10

If there is a message popup during the installation of driver such as the message show below, it will be required to **disable the Driver Signature Enforcement** in Windows 10 before proceeding of driver installation.



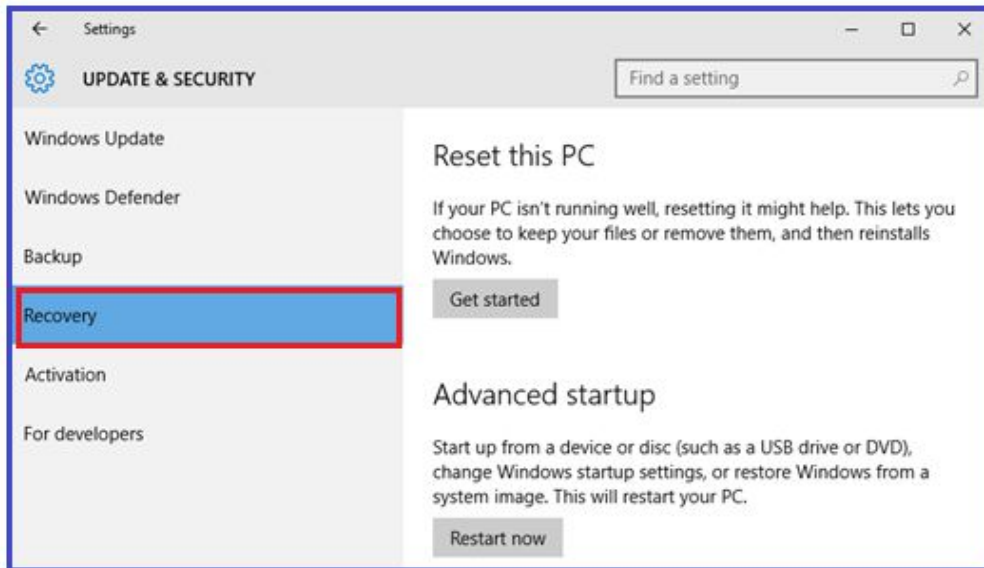
## Procedure

To disable driver signature verification, we're going to need to get into the Troubleshooting options from the boot manager. You are requesting to perform the steps below.

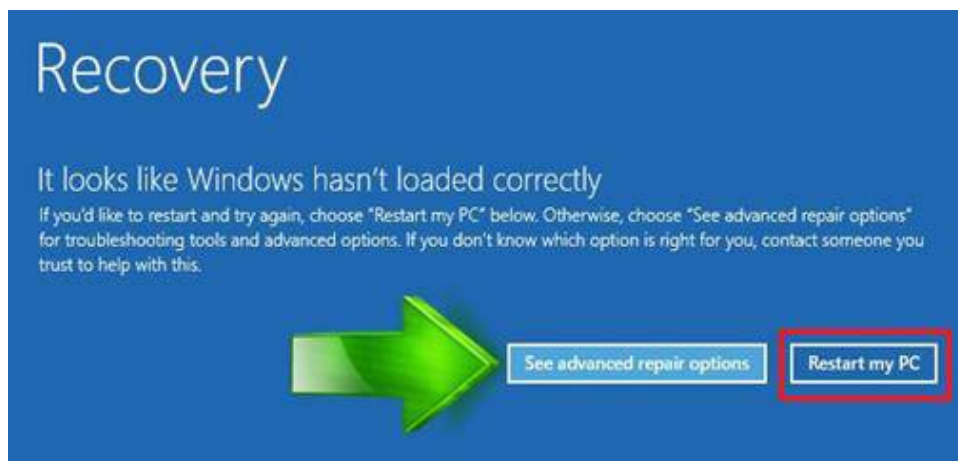
1. Hold down the Windows  key + I.
2. Switch over to the **"Update & security"** section.



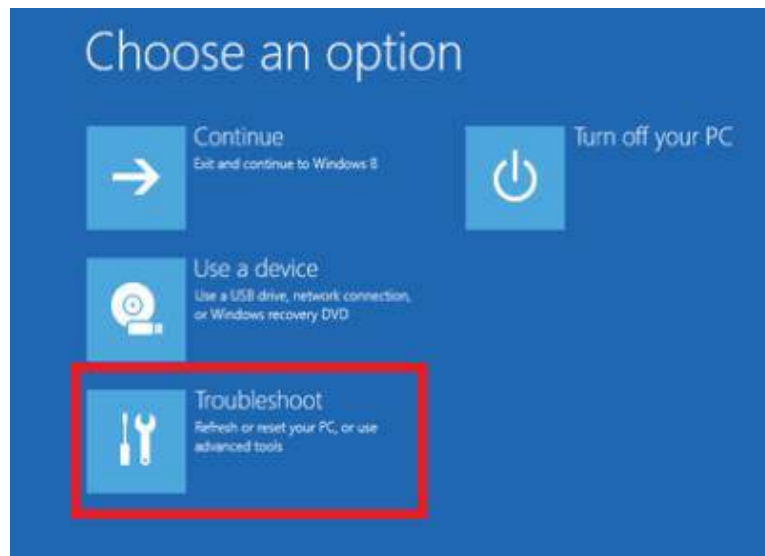
3. Then click on the **Recovery option** on the left hand side.



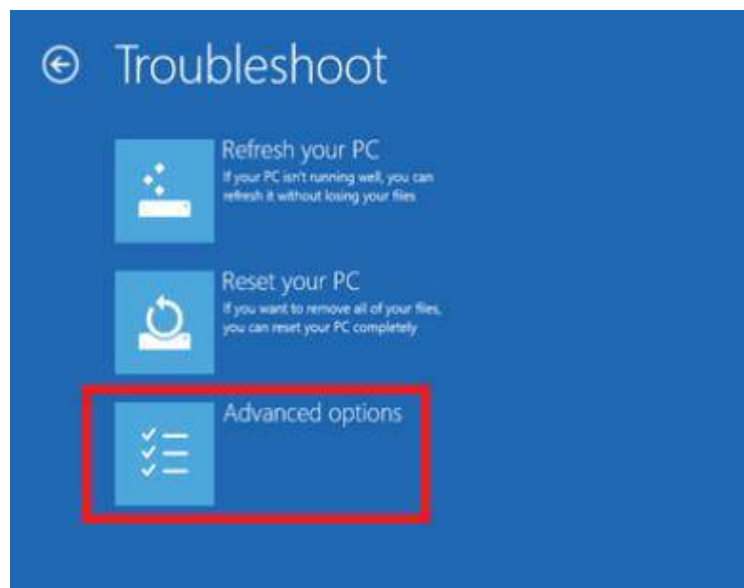
4. Once selected, you will see **See advanced repair options** appear on the right hand side. You will need to click on the **"Restart my PC"** button.



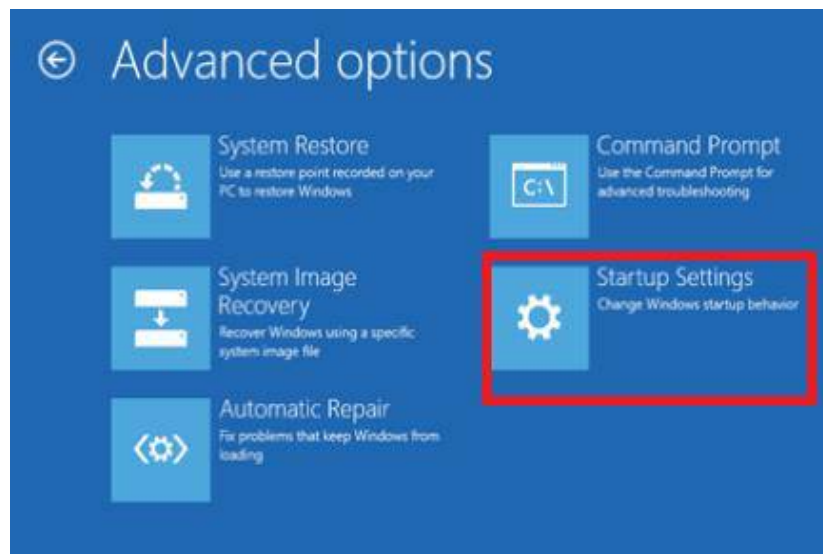
5. Once your Computer has rebooted you will need to choose the **Troubleshoot** option.



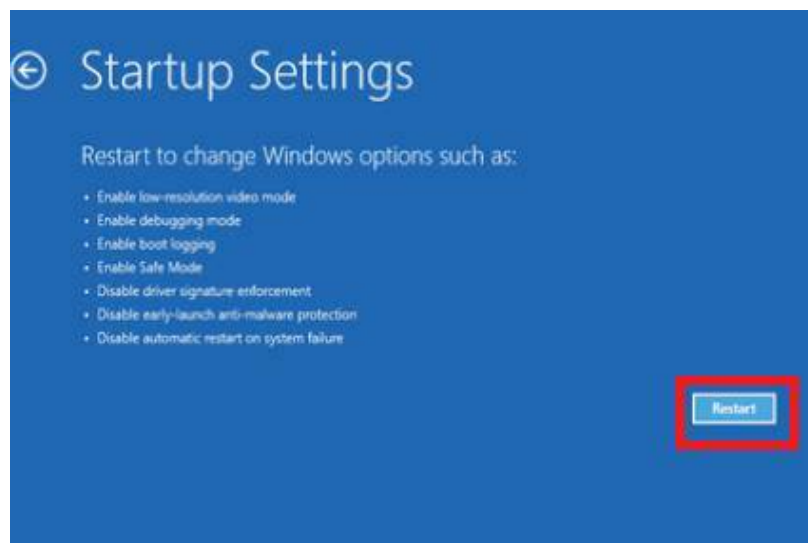
6. Then head into **Advanced options**.



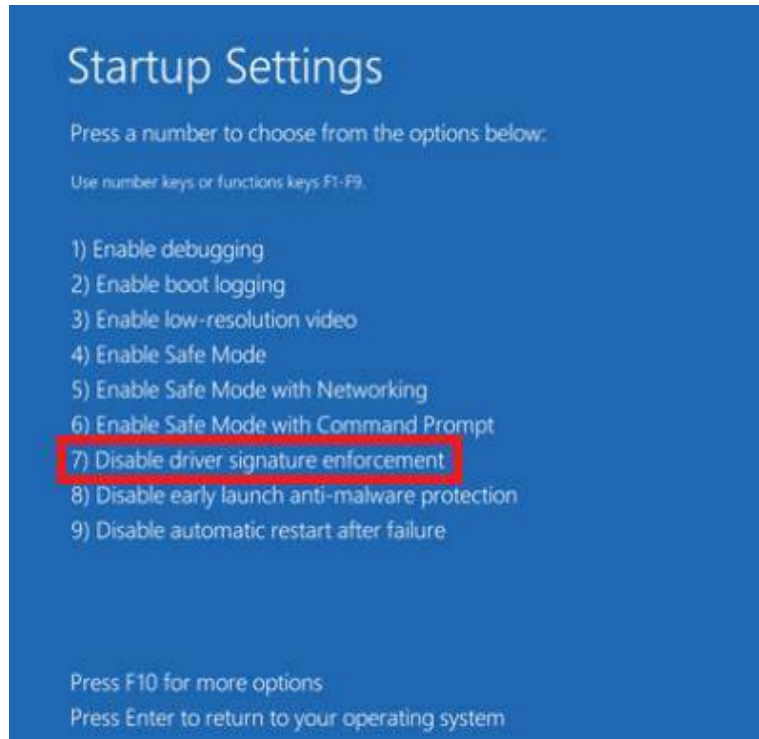
7. In the Advanced Options window, choose **Startup Settings**.



8. Then **Start-up Settings**. Since we are modifying boot time configuration settings, you will need to restart your computer one last time.



9. Here you will be given a list of startup settings that you can change. The one we are looking for is “**Disable driver signature enforcement**”. To choose the setting, you will need to press the **F7** key.



10. Your PC will then reboot. Proceed to install your drivers. During the installation procedure, Windows will inform you that can't verify the publisher of this driver software. Just ignore the warning message and choose “*Install this driver software anyway*” to complete the installation.

## Procedure to install your drivers

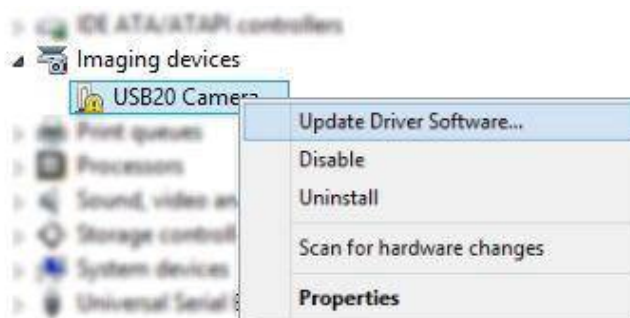
1. After the computer starts, plug in the Dino-Lite to the USB port.



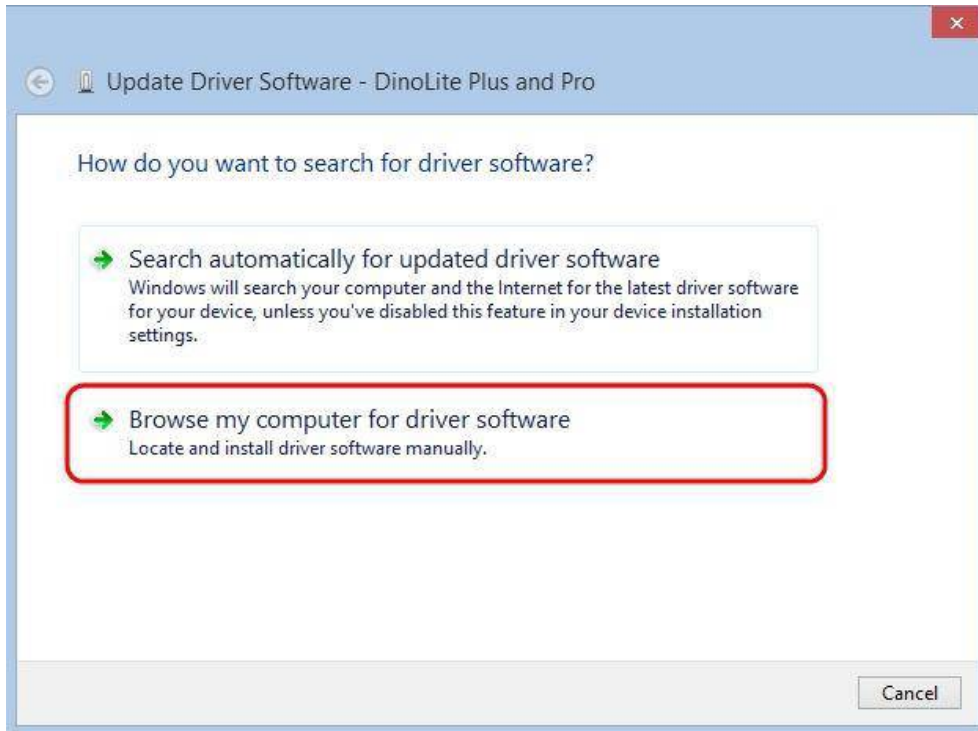
2. Now open the Device Manager by pressing the Windows key + X keyboard combination and then select **Device Manager** from the menu.



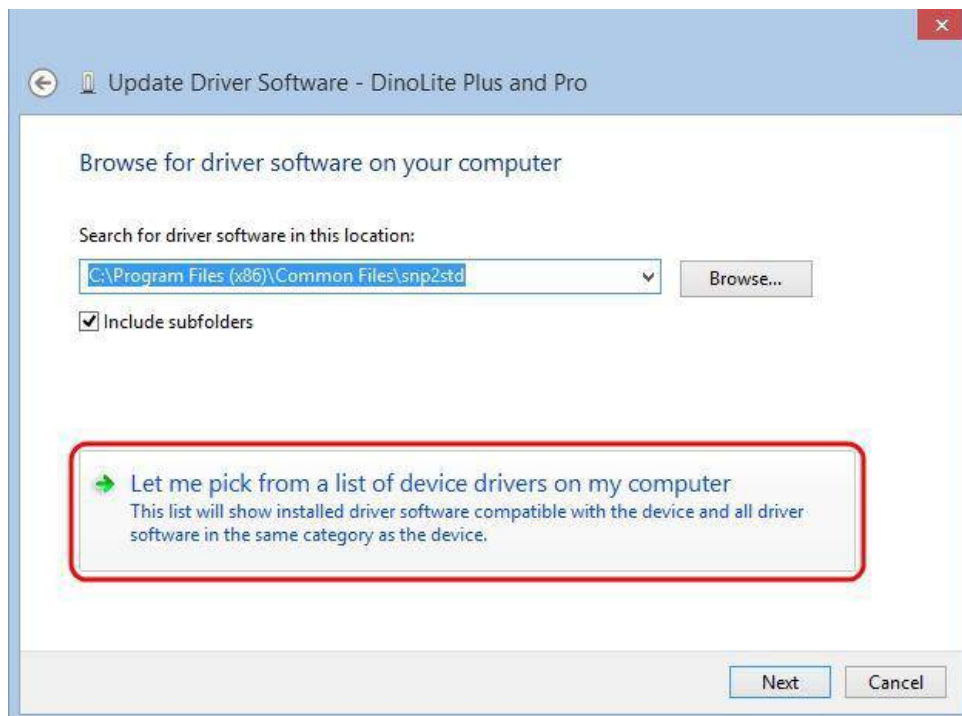
3. Look for devices with yellow “!” or “?” under the “Imaging devices” category. Right click on it and select **Update Driver Software...**



4. In the Update Driver Software window, select the **Browse my computer for driver software** option.



5. Then select the **Let me pick from a list of device drivers on my computer** option.



6. Select the device driver from the model list (**DinoLite Plus and Pro** for AM3X3/AM311S/AM4XX, or **DinoLite** for AM211/311) and then press the **Next** button.

**Note:** If can't find the device driver from the model list, try to manually select the driver by clicking **Have Disk**. Then select the **snp2std** folder (AM3XX/AM4XX) or **snpstd3** folder (AM211) located at: C:\Program Files (x86)\Common Files\.

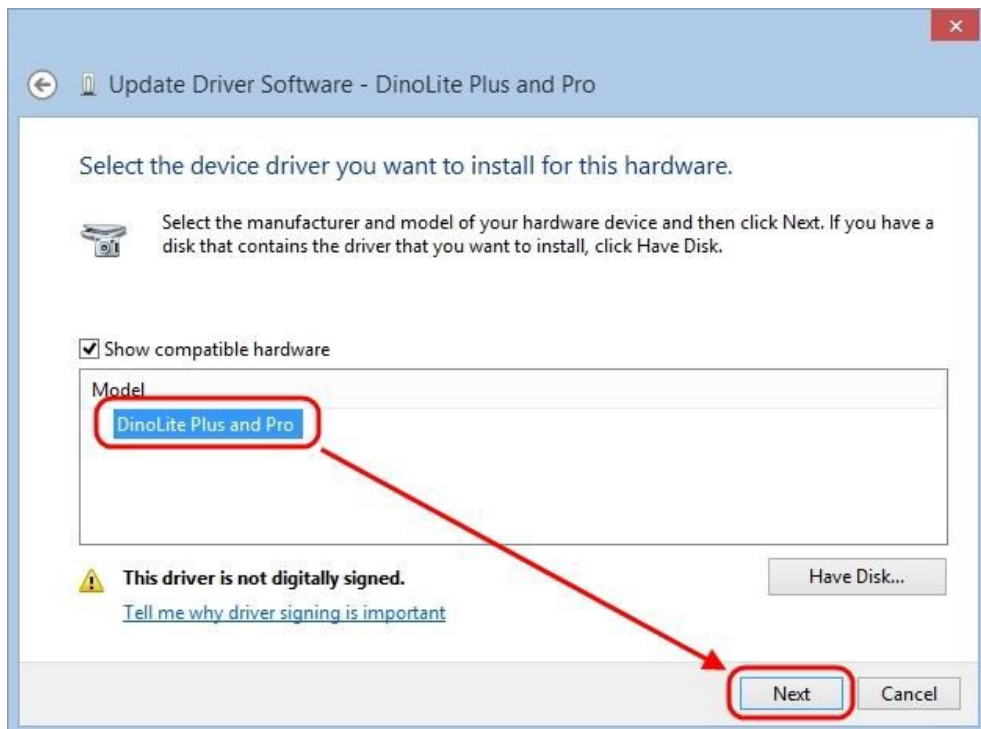
7. Select the device driver for your model series (refer below for which device driver to choose) and then press the **Next** button.

- For Dino-Lite Plus and Pro series (AM3X3/AM311S and AM4XX), choose **DinoLite Plus and Pro** from the model list like the image below.

**Note:** If can't find DinoLite Plus and Pro, press on **Have Disk**. Then select the snp2std folder located at: C:\Program Files (x86)\Common Files\snp2std

- For Dino-Lite AM211/ AM311, choose **DinoLite** from the model list.

Note: If can't find DinoLite, press on **Have Disk**. Then select the snpstd3 folder located at: C:\Program Files (x86)\Common Files\snpstd3





8. Now the Windows Security dialog as shown below should pop up. Select **Install this driver software anyway** to continue installation.



9. When the installation is complete a message will show like the one below.

