

**Dino-Lite**  
Digital Microscope  
The Industry Standard

DINO-LITE PRODUCT RANGE FOR:

Art and paper restorers,  
conservators, antique collectors,  
museums and archeologists



## APPLICATIONS

The Dino-Lite digital microscopes are tailored for a broad range of user groups. In the art and paper restorers business the following target groups can be distinguished:

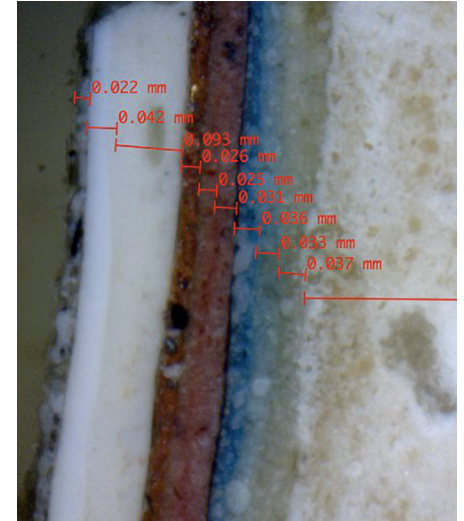
- Painting and art restorers
- > Art and antique collectors
- > Museums
- > Forensic departments
- > Auction houses
- > Archeologists
- > Palaeontologist

## A PROFESSIONAL SOLUTION

Professional solution for inspection, quality control, classifying and working on art, paintings, ancient relics, antiques or old coins. The series with long working distance of up to 15 cm enables the user to work under the microscope. The built-in adjustable polarizer helps to reduce glare on shiny objects. Available in composite or full aluminum alloy housing.

## A POWERFUL TOOL

Dino-Lite has developed a special range of microscopes and accessories, tailored to fit the needs of art and paper restorers and everybody working with art, paintings, ancient relics, antiques, old coins, etc. The Dino-Lite products are available for professionals as well as for hobbyists. Specially designed models with UV light, infrared light or built-in polarizer make it an ideal solution for inspection and working on all kinds of art and antique. Bundled with the DinoCapture software for Windows or DinoXscope software for Apple Macintosh, the Dino-Lite is a very powerful and easy to use tool.



---

THE DINO-LITE IS VERY USEFUL FOR ANALYZING AND RESTORING PAINTINGS, DOCUMENTS, TEXTILES AND OTHER OBJECTS OF ART.

---



# DINO-LITE SOFTWARE

More info: [www.dino-lite.eu/support/software](http://www.dino-lite.eu/support/software)

## ADVANCED SOFTWARE INCLUDED

A professional, reliable software environment is essential when working with computer accessories like a USB microscope. All Dino-Lite USB products are equipped with an in-house developed software suite. The Dino-Capture software is continuously developed, is free of charge for Dino-Lite users and has an automatic update feature. DinoCapture software is available for Windows and DinoXcope for Macintosh computers. DinoCapture software is intuitive, user-friendly and can be used without hardly any training. Free online & e-mail software support is available.



## LANGUAGES

The DinoCapture 2.0 software is available in many languages, such as: English, German, French, Spanish, Chinese, Japanese, Portuguese, Italian, Russian, Dutch, Greek, Hungarian, Polish, Romanian, Swedish, Finnish, Danish, Czech, Croatian, Norwegian, Turkish.

## MAIN SOFTWARE FEATURES

---

- > Capturing photographs, videos or time-lapsed videos
  - > Saving pictures in several formats
  - > Advanced image processing
  - > Measurement options like: line, radius, circle, 3-point circle, angle, etc.
  - > Measurements on captured images or on live images
  - > Calibration options
  - > E-mail integration
  - > Adding notes and markings on images
  - > Skype integration for real-time on-line sharing with suppliers, customers or colleagues
  - > Connect multiple Dino-Lite microscopes
  - > Controlling lighting options from the software
  - > IP functionality for remote viewing of microscopic images
  - > Barcode/QR code recognition functionality
  - > GPS integration
-

# DINO-LITE UNIVERSAL

More info: [www.dino-lite.eu/universal](http://www.dino-lite.eu/universal)

## AM4113ZT

The main features of the AM4113ZT are:

1.3 Megapixel sensor | USB 2.0 connection | 10-70x & 200x magnification | Adjustable integrated polarizer | 8 white switchable white LEDs | Extensive measurement functionality | Calibrated measurements



1.3 MEGAPIXEL  
1280 x 1024



USB 2.0



ADJUSTABLE  
~10-70x & 200x



POLARIZER  
ANTI-REFLECTION



8 WHITE LEDs  
SWITCHABLE



MEASUREMENT  
FUNCTIONALITY



STANDARD  
WORKING  
DISTANCE

## AM4013MZT

The main features of the AM4013MZT are:

1.3 Megapixel sensor | USB 2.0 connection | 10-70x & 200x magnification | Adjustable integrated polarizer | 8 white switchable white LEDs | Metal housing, Extensive measurement functionality  
Calibrated measurements.



1.3 MEGAPIXEL  
1280 x 1024



USB 2.0



ADJUSTABLE  
~10-70x & 200x



POLARIZER  
ANTI-REFLECTION



8 WHITE LEDs  
SWITCHABLE



MEASUREMENT  
FUNCTIONALITY



STANDARD  
WORKING  
DISTANCE

## AM4515ZT

The main features of the AM4515ZT are:

1.3 Megapixel sensor | USB 2.0 connection | 20-220x magnification  
Adjustable integrated polarizer | 8 white switchable white LEDs  
Automatic Magnification Reading (AMR) | Extensive measurement  
functionality | Calibrated measurements | Exchangeable caps.



1.3 MEGAPIXEL  
1280 x 1024



USB 2.0



ADJUSTABLE  
~20-220x



POLARIZER  
ANTI-REFLECTION



8 WHITE LEDs  
SWITCHABLE



AUTOMATIC  
MAGNIFICATION  
READING  
AMR



MEASUREMENT  
FUNCTIONALITY



STANDARD  
WORKING  
DISTANCE



EXCHANGEABLE  
CAP

## AM7915MZT

The main features of the AM7915MZT are:

5 Megapixel sensor | USB 2.0 connection | 10-220x magnification  
Adjustable integrated polarizer | 8 white switchable white LEDs  
Metal housing | Flexible LED Control (FLC) | Extended Depth of Field  
(EDOF) | Extended Dynamic Range (EDR) | Automatic Magnification  
Reading (AMR) | Extensive measurement functionality | Calibrated  
measurements | Exchangeable caps.



5 MEGAPIXEL  
2592 x 1944



USB 2.0



ADJUSTABLE  
~10-220x



POLARIZER  
ANTI-REFLECTION



8 WHITE LEDs  
SWITCHABLE



METAL  
HOUSING



FLEXIBLE  
LED CONTROL  
FLC



EXTENDED  
DEPTH OF FIELD  
EDOF



EXTENDED  
DYNAMIC RANGE  
EDR



AUTOMATIC  
MAGNIFICATION  
READING  
AMR



MEASUREMENT  
FUNCTIONALITY



EXCHANGEABLE  
CAP



# DINO-LITE LONG WORKING DISTANCE

More info: [www.dino-lite.eu/longworkingdistance](http://www.dino-lite.eu/longworkingdistance)

## AM4113ZTL

The main features of the AM4113ZTL are:

1.3 Megapixel sensor | USB 2.0 connection | 10-90x magnification  
Long Working Distance (LWD) | Adjustable integrated polarizer  
8 white switchable white LEDs | Extensive measurement functionality  
Calibrated measurements.



1.3 MEGA PIXEL  
1280 x 1024



USB 2.0



CONTINUOUS  
~10x-90x



4-15 cm

LONG WORKING  
DISTANCE



POLARIZER  
ANTI-REFLECTION



8 WHITE LEDS  
SWITCHABLE



MEASUREMENT  
FUNCTIONALITY



EXCHANGEABLE  
CAP

## AM4013MZTL

The main features of the AM4013MZTL are:

1.3 Megapixel sensor | USB 2.0 connection | 10-90x magnification  
Long Working Distance (LWD) | Adjustable integrated polarizer  
8 white switchable white LEDs | Metal housing | Extensive  
measurement functionality | Calibrated measurements.



1.3 MEGA PIXEL  
1280 x 1024



USB 2.0



CONTINUOUS  
~10x-90x



4-15 cm

LONG WORKING  
DISTANCE



POLARIZER  
ANTI-REFLECTION



8 WHITE LEDS  
SWITCHABLE



METAL  
HOUSING



MEASUREMENT  
FUNCTIONALITY



EXCHANGEABLE  
CAP

## AM4515ZTL

The main features of the AM4515ZTL are:

1.3 Megapixel sensor | USB 2.0 connection | 10-140x magnification  
 Adjustable integrated polarizer | 8 white switchable white LEDs  
 Automatic Magnification Reading (AMR) | Extensive measurement  
 functionality | Calibrated measurements | Exchangeable caps.



1.3 MEGA PIXEL  
1280 x 1024



USB 2.0



CONTINUOUS  
~10x - 140x



4-15 cm

LONG WORKING  
DISTANCE



POLARIZER  
ANTI-REFLECTION



8 WHITE LEDs  
SWITCHABLE



AUTOMATIC  
MAGNIFICATION  
READING



MEASUREMENT  
FUNCTIONALITY



EXCHANGEABLE  
CAP

## AM7915MZTL

The main features of the AM7915MZTL are:

5 Megapixel sensor | USB 2.0 connection | 10-140x magnification  
 Long Working Distance (LWD) | Adjustable integrated polarizer  
 8 white switchable white LEDs | Metal housing | Flexible LED Control  
 (FLC) | Extended Depth of Field (EDOF) | Extended Dynamic Range  
 (EDR) | Automatic Magnification Reading (AMR) | Extensive  
 measurement functionality | Calibrated measurements | Exchange-  
 able caps.



5 MEGA PIXEL  
2592 x 1944



USB 2.0



CONTINUOUS  
~10x - 140x



POLARIZER  
ANTI-REFLECTION



8 WHITE LEDs  
SWITCHABLE



METAL  
HOUSING



FLEXIBLE  
LED CONTROL  
FLC



EXTENDED  
DEPTH OF FIELD  
EDOF



EXTENDED  
DYNAMIC RANGE  
EDR



AUTOMATIC  
MAGNIFICATION  
READING



MEASUREMENT  
FUNCTIONALITY



EXCHANGEABLE  
CAP

# DINO-LITE SPECIAL LIGHTING

More info: [www.dino-lite.eu/speciallighting](http://www.dino-lite.eu/speciallighting)

## AM4113T-FVW

The main features of the AM4113T-FVW are:

1.3 Megapixel sensor | USB 2.0 connection | 10-70x & 200x magnification | Ultraviolet (UV) LEDs with 390-400nm | 4 white / 4 UV LEDs | Extensive measurement functionality | Calibrated measurements.



 1.3 MEGAPIXEL  
1280 x 1024

 USB 2.0

 ADJUSTABLE  
~10-70x & 200x

 UV-LEDs  
390~400 nm

 SWITCHABLE  
UV/WHITE LEDs

 MEASUREMENT  
FUNCTIONALITY

 STANDARD  
WORKING  
DISTANCE

## AD4113T-I2V

The main features of the AD4113T-I2V are:

1.3 Megapixel sensor | USB 2.0 connection | 20-200x magnification  
Ultraviolet (UV) 390nm and Near-infrared (NIR) 940nm LEDs  
4 Ultraviolet (UV) / 4 Near-infrared (NIR) LEDs | Extensive measurement  
functionality | Calibrated measurements | Exchangeable caps.



 1.3 MEGAPIXEL  
1280 x 1024

 USB 2.0

 ADJUSTABLE  
~20-200x

 UV-LEDs  
400 nm

 INFRARED  
LEDs ~940nm

 SWITCHABLE  
UV/IR LEDs

 MEASUREMENT  
FUNCTIONALITY

 EXCHANGEABLE  
CAP



## AM4115T-FVW

The main features of the AM4115T-FVW are:

1.3 Megapixel sensor | USB 2.0 connection | 20-220x magnification  
Ultraviolet (UV) LEDs with 390-400nm | 4 white / 4 UV LEDs | Extensive  
measurement functionality | Calibrated measurements | Exchange-  
able caps.



1.3 MEGAPIXEL  
1280 x 1024



USB 2.0



ADJUSTABLE  
~20-220x



UV-LEDs  
390~400 nm



SWITCHABLE  
UV/WHITE LEDS



MEASUREMENT  
FUNCTIONALITY



EXCHANGEABLE  
CAP

## AM7115MT-FUW

The main features of the AM7115MT-FUW are:

5 Megapixel sensor | USB 2.0 connection | 20-220x magnification  
Ultraviolet (UV) LEDs with 375nm | 4 white / 4 UV LEDs | Metal  
housing | Extensive measurement functionality | Calibrated  
measurements | Exchangeable caps.



5 MEGAPIXEL  
2592 x 1944



USB 2.0



ADJUSTABLE  
~20-220x



UV-LEDs  
375 nm



METAL  
HOUSING



MEASUREMENT  
FUNCTIONALITY



EXCHANGEABLE  
CAP

# DINO-LITE EYEPIECE

More info: [www.dino-lite.eu/eyepiece](http://www.dino-lite.eu/eyepiece)

## EYEPIECE CAMERAS

With the DinoEye eyepiece cameras you can turn your conventional microscope into a digital microscope. You can easily replace the ocular (eyepiece) of your non-digital microscope with the DinoEye eyepiece and connect it via USB to your computer.

The DinoEye TV models can be connected straight into your TV using a TV connection. With the included proprietary DinoCapture software you have a professional software environment for image or video processing, including calibrated measurement features (USB models only).



## AM4025X

The AM4025X has different adapters to fit microscopes with 23, 30 or 30,5 mm eyepieces. The DinoCapture software is bundled with the product.



USB 2.0



MEASUREMENT  
FUNCTIONALITY



FITS 23, 30, 30,5 mm  
OCULARS



1.3 MEGAPIXEL  
1280 x 1024



CONNECTS  
TO C-MOUNT



## AM7025X

The DinoEye Edge 5MP eyepiece camera provides superior image quality and true colour reproduction.



USB 2.0



MEASUREMENT  
FUNCTIONALITY



FITS 23, 30, 30,5 mm  
OCULARS



5 MEGAPIXEL  
2592 x 1944



CONNECTS  
TO C-MOUNT



# DINO-LITE ACCESSORIES

More info: [www.dino-lite.eu/accessories](http://www.dino-lite.eu/accessories)

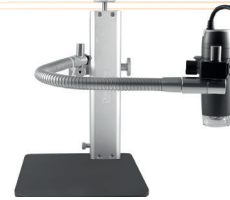


## RK-06A

The Dino-Lite RK-06A stand is a sturdy and stable mid-range stand solution that can be used with all Dino-Lite digital microscopes. It is constructed of stainless steel and lightweight aluminum and offers precise focus adjustment as well as a quick vertical release function.

## RK-10A

The Dino-Lite RK-10A stand is a sturdy and stable high-range stand solution that can be used with all Dino-Lite digital microscopes. It is constructed of stainless steel and lightweight aluminum and offers precise focus adjustment as well as a quick vertical release function.



## RK-10-FX

The RK-10-FX is an optional flexible arm extension for the RK-06A and the RK-10A stand.



## RK-10-PX

The RK-10-PX is a XY positioning arm with accurate and smooth adjustment options. It is a great add-on to the high precision RK-10A and the RK-06A stand.



## RK-10-EX

The RK-10-EX is an optional horizontal arm attachment for the RK-06A and the RK-10A stand.



## RK-10-VX

RK-10-VX is an optional vertical arm attachment for the RK-06A and the RK-10A stand.

# DINO-LITE ACCESSORIES

More info: [www.dino-lite.eu/accessories](http://www.dino-lite.eu/accessories)



## MS52BA2

Dino-Lite heavy duty jointed flex arm stand. The MS52BA2 is a jointed articulating flex-arm type stand with holster for use with the Dino-Lite hand held digital microscopes.



## RK-02

The RK-02 is a durable gooseneck stand solution designed for flexible and versatile usage with a Dino-Lite digital microscope. The C-clamp of the RK-02 fits to virtually any surface of up to 7 cm (~3 inch) thick, and can be mounted horizontally or vertically.



## SW-F1

Foot pedal accessory allowing you to take a picture with your foot.



## WF-10

The WF-10 WiFi Streamer allows Dino-Lite USB 2.0 models to be used wirelessly in connection with an iOS (iPhone/iPad) or Android app on a tablet, smartphone, or computer.

MODEL	RESOLUTION	MAGNIFICATION	CONNECTION	LONG WORKING DISTANCE	MEASUREMENT & CALIBRATION	LED	EXCHANGEABLE CAPS	POLARIZER	METAL HOUSING	ESD- SAFE	GENERATION	ADDITIONAL FEATURES	PRICE RANGE	TYPE OF LEDS	OCULAR TUBE DIAMETER
AM4113ZT	1,3MP	10-70x, 200x	USB 2.0	N	Y	8	N	Y	N	N		-	€ 300-400	white	
AM4515ZT	1,3MP	20-220x	USB 2.0	N	Y	8	Y	Y	N	N	Edge	AMR	€ 500-600	white	
AM4013MZT	1,3MP	10-70x, 200x	USB 2.0	N	Y	8	N	Y	Y	Y			€ 400-500	white	
AM7915MZT	5 MP	10-220x	USB 2.0	N	Y	8	Y	Y	Y	Y	Edge	AMR/EDOF/EDR/FLC	€ 900-1000	white	
AM4113ZTL	1,3 MP	20-90x	USB 2.0	Y	Y	8	N	Y	N	N			€ 300-400	white	
AM4515ZTL	1,3 MP	10-140x	USB 2.0	Y	Y	8	Y	Y	N	N	Edge	AMR	€ 500-600	white	
AM4013MZTL	1,3 MP	20-90x	USB 2.0	Y	Y	8	N	Y	Y	Y			€ 500-600	white	
AM7915MZTL	5 MP	10-140x	USB 2.0	Y	Y	8	Y	Y	Y	Y	Edge	AMR/EDOF/EDR/FLC	€ 900-1000	white	
AM4113T-FVW	1,3 MP	10-70x, 200x	USB 2.0	N	Y	4+4	N	N	N	N			€ 300-400	390/400nm UV + white	
AD4113T-I2V	1,3 MP	20-200x	USB 2.0	N	Y	4+4	Y	N	N	N			€ 300-400	390/400nm UV + 940nm IR	
AM4115T-FVW	1,3 MP	10-140x	USB 2.0	Y	Y	4+4	Y	N	N	N	Edge		€ 500-600	390/400nm UV + white	
AM7115MT-FUW	5 MP	20-220x	USB 2.0	N	Y	4+4	Y	N	Y	Y	Edge		€ 700-800	375nm UV + white	
AM4025X	1,3 MP	Built-in	USB 2.0	-	Y	-	-	-	-	-	Edge	manual EDOF	€ 200-300		23,30 & 30,5 mm
AM7025X	5 MP	Built-in	USB 2.0	-	Y	-	-	-	-	-	Edge	manual EDOF	€ 400-500		23,30 & 30,5 mm

RK-06A	is a sturdy and stable mid-range stand	RK-10-EX	Horizontal arm	RK-10-VX	Vertical arm
RK-10A	is a sturdy and stable high-range stand	RK-10-FX	Flexible arm	RK-10-PX	Positioning arm
RK-02	Gooseneck stand				
MS52BA2	Heavy duty stand with flexible arm				
SW-F1	Foot pedal				
WF-10	WiFi streamer for Dino-Lite USB 2.0 models				
BC-120B	BC-120B: Spare battery and charger for WF-10				

## IDEAL FOR RESTORATION OF ARCHAEOLOGICAL AND ART OBJECTS

Dino-Lite digital microscopes can be a solution for the restoration of archaeological and art objects. This mobile microscope is a useful tool because it makes details visible and is flexible in application. Restorers of the Tropenmuseum recently experienced this. This time the Tropenmuseum in Amsterdam has restored ten bisj poles. Thanks to the Dino-Lites, the museum visitors were able to observe the achievements of the conservators down to the wood fiber level. The Dino-Lite also proved to be a valuable tool for restoring down to the square time-lapse millimeter.

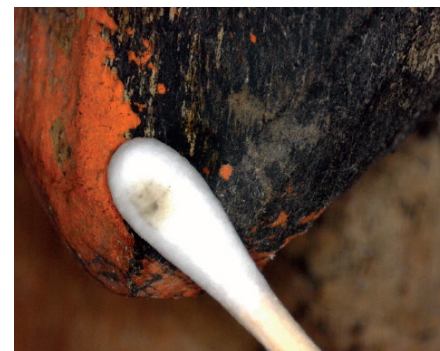
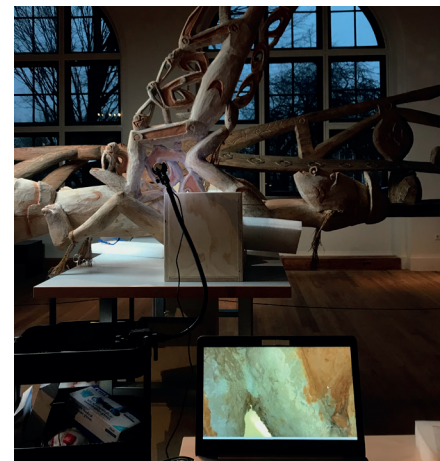
### REVERENCE FOR THE DEAD

With a height of up to ten meters, the bisj poles were made in the last century by the Asmat, a Papuan people in former Dutch New Guinea. Using these richly decorated nutmeg wood poles, the dead

are still being honored. The bisj pole ensures that the soul of the deceased can ascend to the afterlife.

### VULNERABLE MATERIALS

The Tropenmuseum has twelve poles of this kind from the last century. Ten have been restored. Extremely careful cleaning was the most important task. The restorers cleaned every inch of the poles using a soft brush, also called a dry restoration sponge, that was specifically chosen for cleaning these objects. Not damaging the original paint layers was the main goal. The poles are painted with natural pigments, like burnt ochre and ground shells. These are vulnerable materials. They used a brush to clean the wood. They therefore barely needed to touch the wood, and the dirt was removed.





## VERY FLEXIBLE

Precision work was required. The human eye cannot discern these subtle nuances for long. One restorer said: "Using the Dino-Lite microscope, we easily noticed the difference between dirt, overpainting and the original paint layer. We used this microscope before and after cleaning the surface. That was the only way to easily notice the changes. In this area, the Dino-Lite was also very flexible." The time-lapse function was also very handy during the recovery process. It could be used to document how different layers were applied onto the original paint layer.

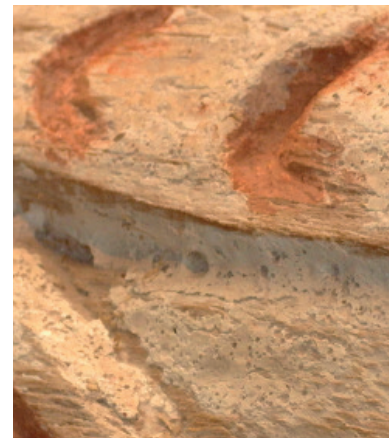
## VIEWING THE WORK ON A SCREEN

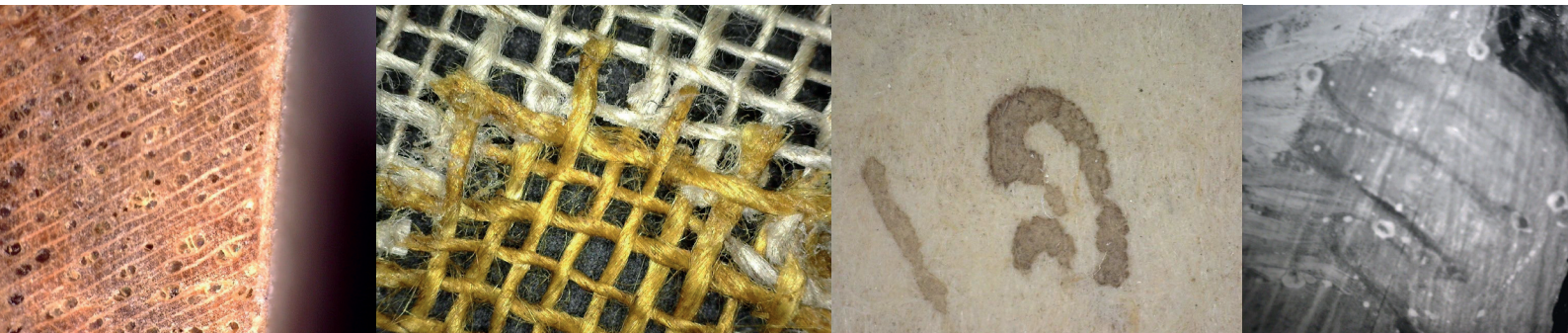
The restoration took place in the Lichthal, the central hall of the museum. "In this way, the visitors could easily observe our work. An extra dimension was added because visitors could watch on the

screen every detail of what we saw" A museum visitor can't get closer to a restoration process.

## FUTURE RESTORATIONS

For the first time, the restorers of the Tropenmuseum were introduced to the possibilities of the Dino-Lites. They liked to use them, because the enlargements of details and the time-lapse function have contributed to the quality of the restoration work. Because of these experiences, the museum decided that the Dino-Lites can also be used in future restorations. The successful restoration project in the Tropenmuseum showed that the Dino-Lite should be an important instrument for restorers of art and other museum objects.





## Dino-Lite Digital Microscope

### The Industry Standard

Version 2020/Q1 © Dino-Lite Europe/ IDCP B.V. Unauthorized use and/or duplication of this material without express and written permission from us is strictly prohibited.

Dino-Lite Europe is the importer and master distributor for the Dino-Lite products for Europe, Africa and the Middle East. Dino-Lite products are sold by hundreds of local partners, please check [www.dino-lite.eu/wheretobuy](http://www.dino-lite.eu/wheretobuy) for the best reseller in your region.

## IDCP

IDCP B.V.  
Manuscriptstraat 12-14  
1321 NN Almere  
The Netherlands

Telephone: +31 (0) 20 6186322

[info@dino-lite.eu](mailto:info@dino-lite.eu)  
[www.dino-lite.eu](http://www.dino-lite.eu)