


# How to use EDR in DinoCapture 2.0

---

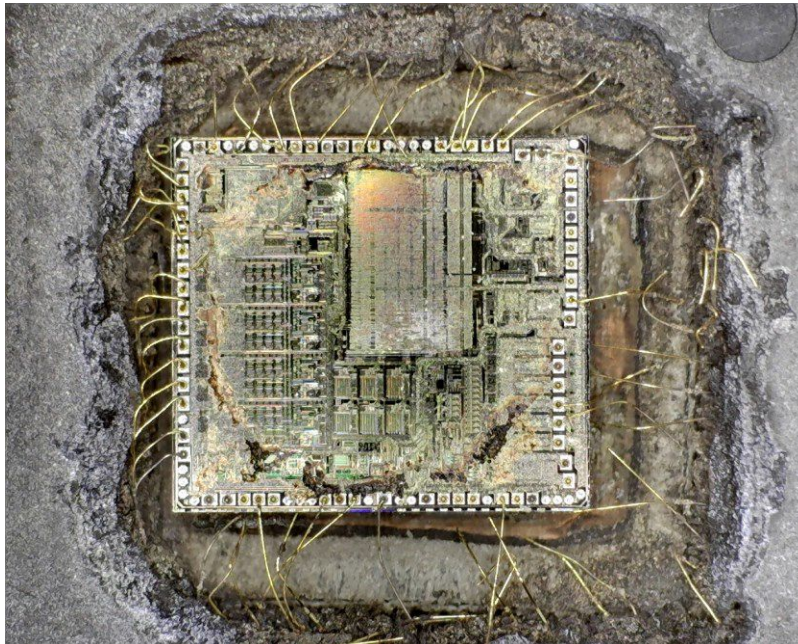
EDR (Extended Dynamic Range) is an image processing tool exclusive to the Dino-Lite Edge AM4815 series on DinoCapture 2.0 version 1.4.8 and higher. For surfaces with large variation in brightness, the EDR capture tool can be ideal for capturing a more neutral image of the surface by only a few clicks.

To capture with EDR, simply click on the EDR icon  located at the left of the camera preview window. The DinoCapture 2.0 will capture three consecutive images with different exposure conditions and stack them together into one image in JPG format. Be sure to keep the Dino-Lite and target object steady without adjustments while taking pictures to obtain the best results. The software will automatically process and stack the pictures so it may take a moment to process before becoming available on the image list.

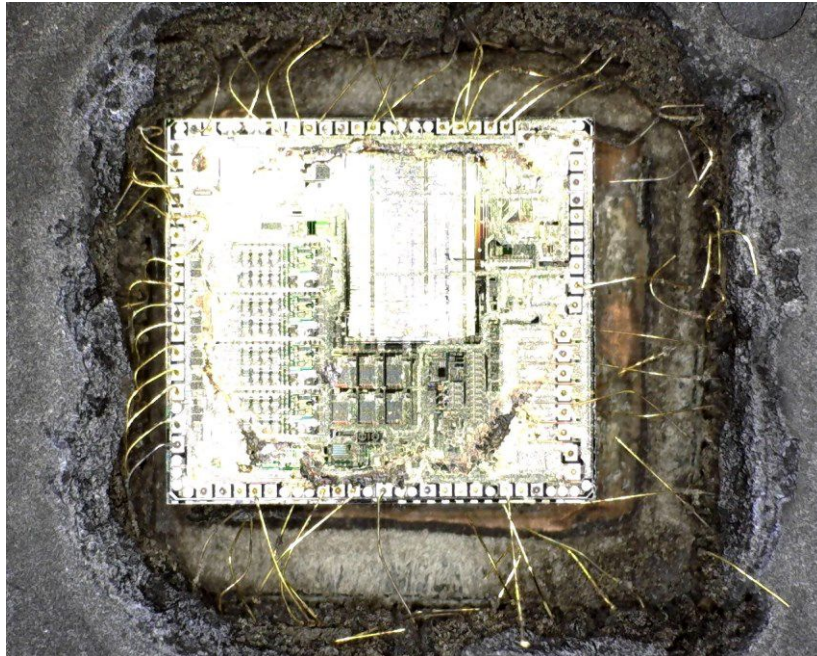
## Image Comparison

The following images are taken with an AM4815ZT, with and without EDR, and also AM4115ZT with polarizer for comparison purpose. The object is a decapped IC.

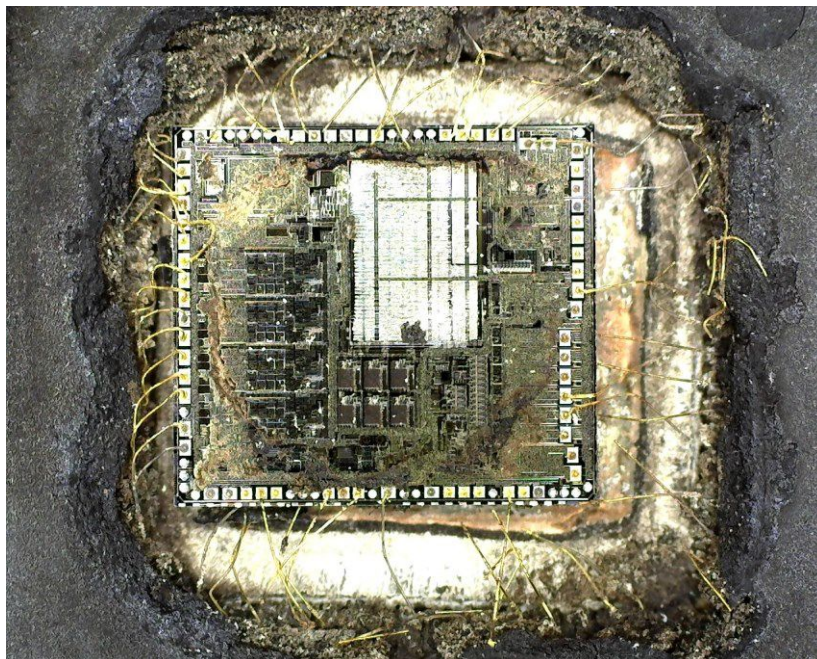
**With EDR**



**Without EDR**



**With Polarizer (AM4115ZT)**



The polarizer helps to remove the reflection from the surface but the high contrast of the surface still yields a large portion of saturated pixels.