

# Driver Installation on Windows 8 or 8.1

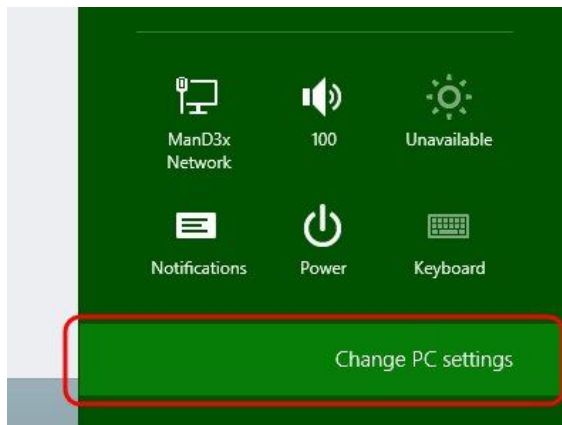
---

If there is a message popup during the installation of driver such as the message show below, it will be required to disable the Driver Signature Enforcement in Windows 8 or 8.1 before proceeding of driver installation.



## Procedure

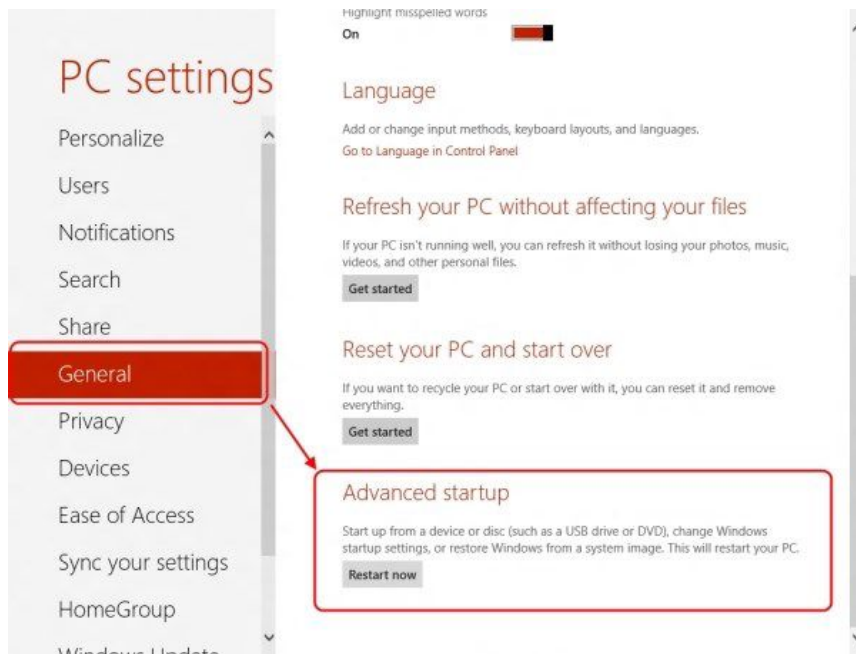
1. Open the Windows 8 Settings panel by pressing the Windows key + I keyboard combination . Click on **Change PC Settings**.



2. The PC settings panel will show up. Have the computer restart with steps as illustrated below for Window 8 or Window 8.1 respectively.

### Windows 8

Select the **General** option, locate the “Advanced startup” section, then press the **Restart now** button.



## Windows 8.1

- a) Select the **Update and recovery** option.



- b) Select the **Recovery** option, locate the “Advanced start-up” section, then press the **Restart now** button.



### Refresh your PC without affecting your files

If your PC isn't running well, you can refresh it without losing your photos, music, videos and other personal files.

Get started

### Remove everything and reinstall Windows

If you want to recycle your PC or restart completely, you can reset it to its factory settings.

Get started

### Advanced start-up

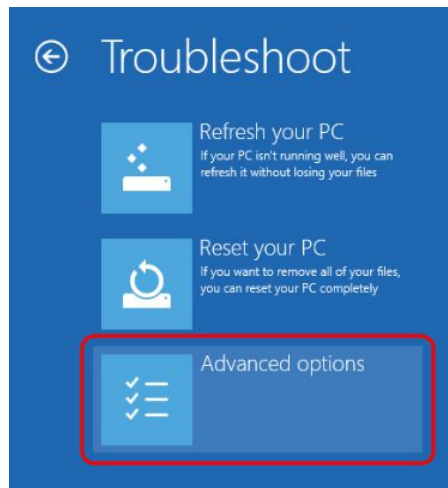
Start up from a device or disc (such as a USB drive or DVD), change Windows start-up settings or restore Windows from a system image. This will restart your PC.

Restart now

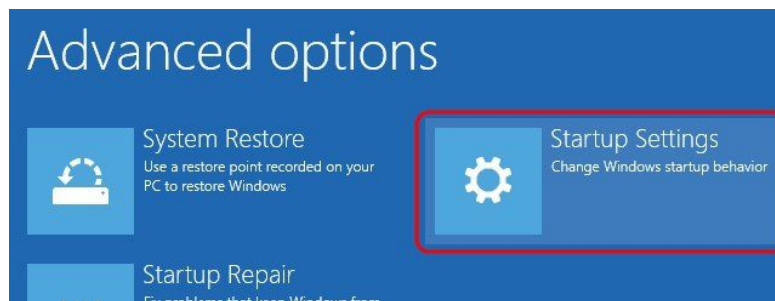
3. Once the computer has rebooted, select the **Troubleshoot** option.



4. Then **Advanced options**.



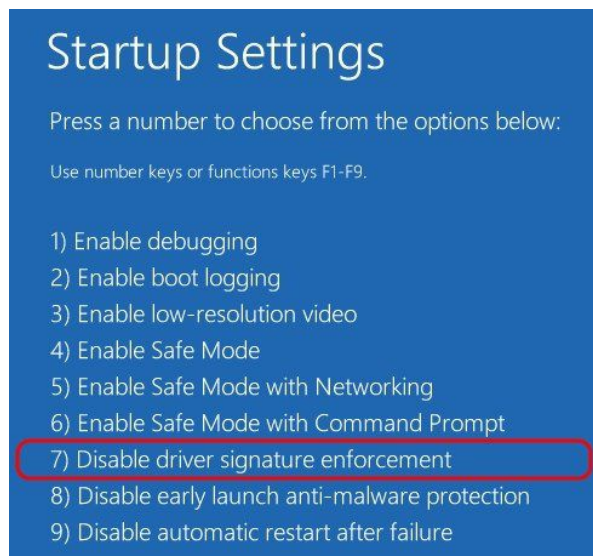
5. Then **Startup Settings**.



6. Click on **Restart** to restart the computer again.



7. A list of startup settings will show up. Select the **Disable driver signature enforcement** option.



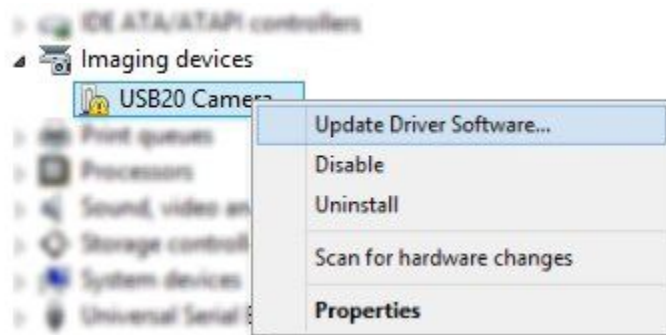
8. After the computer starts, plug in the Dino-Lite to the USB port.



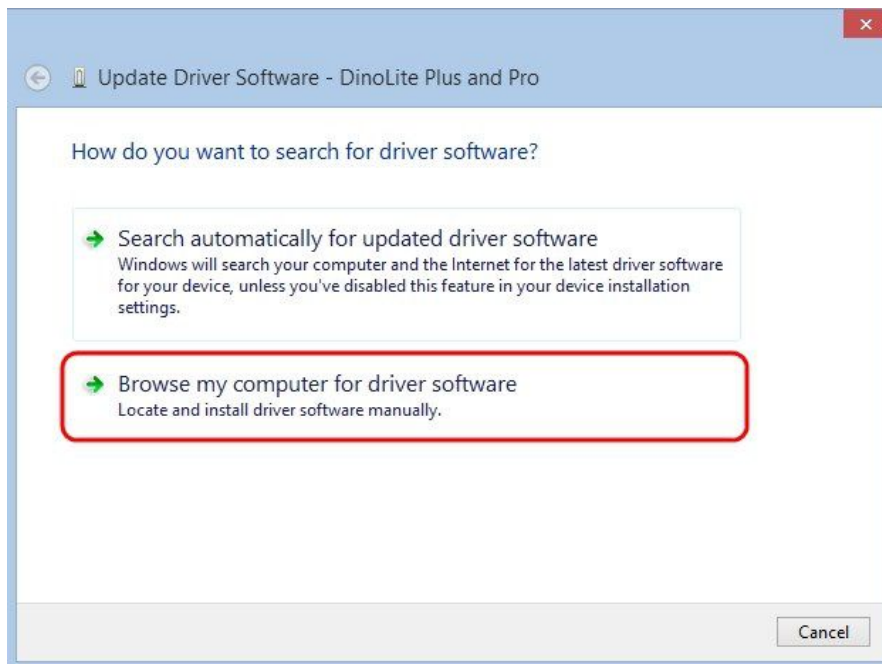
9. Now open the Device Manager by pressing the Windows key + X keyboard combination and then select **Device Manager** from the menu.



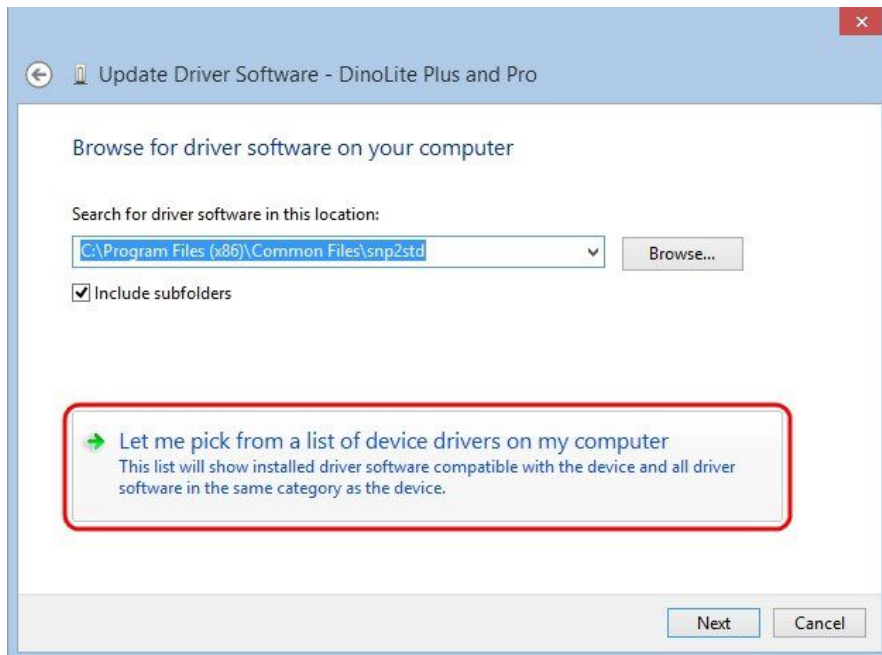
10. Look for devices with yellow “!” or “?” under the “Imaging devices” category. Right click on it and select **Update Driver Software...**



11. In the Update Driver Software window, select the **Browse my computer for driver software** option.



12. Then select the **Let me pick from a list of device drivers on my computer** option.



13. Select the device driver from the model list (**DinoLite Plus and Pro** for AM3XX/AM4XX, or **DinoLite** for AM211) and then press the **Next** button.

Note: If can't find the device driver from the model list, try to manually select the driver by clicking **Have Disk**. Then select the **snp2std** folder (AM3XX/AM4XX) or **snpstd3** folder (AM211) located at: C:\Program Files (x86)\Common Files\.

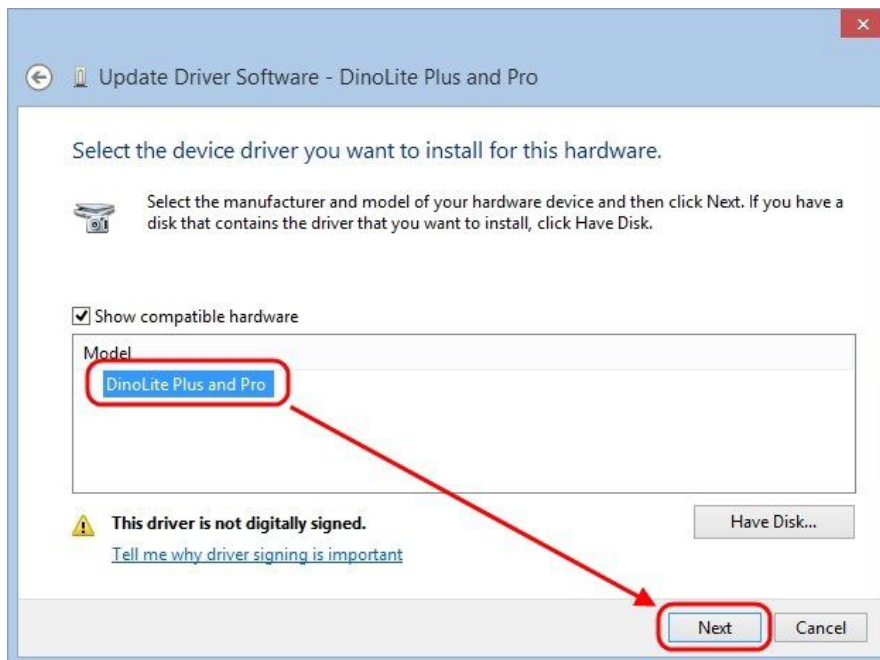
14. Select the device driver for your model series (refer below for which device driver to choose) and then press the **Next** button.

- For Dino-Lite Plus and Pro series (AM3XX and AM4XX), choose **DinoLite Plus and Pro** from the model list like the image below.

Note: If can't find DinoLite Plus and Pro, press on **Have Disk**. Then select the snp2std folder located at: C:\Program Files (x86)\Common Files\snp2std

- For Dino-Lite AM211, choose **DinoLite** from the model list.

Note: If can't find DinoLite, press on **Have Disk**. Then select the snpstd3 folder located at: C:\Program Files (x86)\Common Files\snpstd3





15. Now the Windows Security dialog as shown below should pop up. Select **Install this driver software anyway** to continue installation.



16. When the installation is complete a message will show like the one below.

