

AM7515MT4A



Merk:
Productcode: AM7515MT4A

Korte omschrijving

5 Megapixel resolution
415x ~ 470x magnification
Coaxial and brightfield illumination
Flexible LED Control (FLC)
Automatic Magnification Reading (AMR)

Omschrijving

The AM7515MT4A is a 5MP Dino-Lite Edge Series microscope that has a magnification range of 415x ~ 470x with built-in coaxial illumination. By using the Flexible LED Control (FLC), this model is capable of switching between or mixing, brightfield and coaxial illumination.



USB 2.0



Measurement
functionality



Adjustable
~400x-470x



Flexible LED
Control FLC



Automatic
Magnification
Reading (AMR)



Magnification
lock



5 megapixel
2592 x 1944

Metal
housing



8 White LEDs
switchable



Exchangeable
cap

The coaxial illumination technique reveals details that are very difficult to see under normal light, for example when inspecting wafer plates, microchips or other microelectronics. The AM7515MT4A includes the Automatic Magnification Reading (AMR) feature which automatically detects and displays the magnification in the included Dino-Lite software. These unique features make the Dino-Lite AM7515MT4A a great inspection tool for material analysis, electronics inspection, or any similar application that requires high magnification, coaxial illumination, versatility and mobility.

The Dino-Lite AM7515MT4A is bundled with the user-friendly DinoCapture 2.0 software for Windows. For this model it includes functions such as Automatic Magnification Reading (AMR), Flexible LED Control (FLC), calibration, measurement, capturing & annotating images, and recording video. When focusing at such high magnification it is recommended to use a high-precision stand. The Dino-Lite RK-10A for example is a great add-on, it is a sturdy and stable high-end stand solution constructed of resilient stainless steel and lightweight aluminum and offers a very precise fine-focus adjustment..

Working distance/field of view/depth of field

MAGNIFICATION RATE	WORKING DISTANCE*	FIELD OF VIEW(X)	FIELD OF VIEW(Y)	DEPTH OF FIELD
Listed values may differ slightly	*Without front cap			Unit = mm
415	6.0	0.951	0.697	0.03
420	7.3	0.926	0.680	
430	8.0	0.905	0.664	
440	8.8	0.884	0.648	

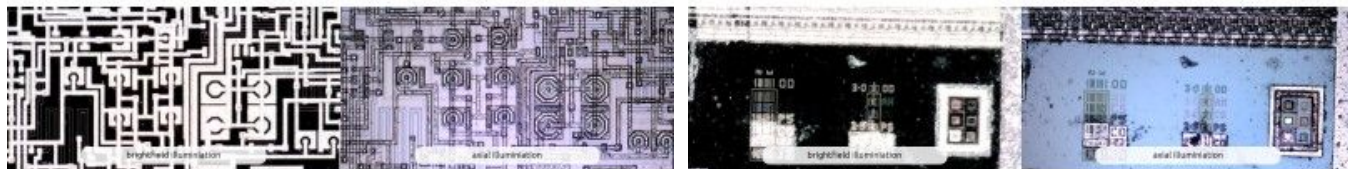
450	10.0	0.876	0.636	
460	11.3	0.847	0.621	
470	11.8	0.828	0.608	0.045

Specificatie

Verlichting	
Licht / LED-type	White
Aantal leds	8
LED aan / uit schakelbaar:	Yes
Infrarood filter	IR cut-filter >650 nm
Diffusor beschikbaar	No
Emissiefilter	No
Polarisator	No
Optiek	
Magnification	415x ~ 470x
Macro zoom	No
Werkafstand	Standard
Type lens	Glas met antireflectiecoating
Sensor	
Sensortype	CMOS
Resolutie	5 Megapixel (2592x1944)
Maximale framesnelheid	30 fps (max 20fps video recording)
Compatibiliteit	
Interface	USB 2.0
Besturingssysteem	Windows 7, 8, 10 & 11, MacOS 10.12 and up
Software	DinoCapture 2.0 (Windows), DinoXcope (Mac OS)
Ondersteunde beeldformaten (Windows)	BMP, GIF, PNG, JPG, TIF, RAS, PNM, TGA, PCX, MNG, WBMP, JP2, JPC, PGX
Ondersteunde videoformaten (Windows)	WMV, FLV, SWF
Ondersteunde beeldformaten (MacOS)	JPEG, PNG
Ondersteunde videoformaten (MacOS)	MOV (max 1.3MP)
Beeldvormingsnormen	DirectShow, UVC
Wifi	Wireless-ready, requires the WF-10 WiFi streamer (optional)
Behuizing	
Materiaal van de behuizing	Metal housing
Vergrotingslot	Yes
Afmetingen	10.7cm (L) x 3.2cm (D)

Gewicht	139g
Kabellengte	1.8m
Kenmerken	
Bijzonderheid	Automatic Magnification Reading (AMR), Flexible LED Control (FLC), Coaxial illumination
Meting	Yes
Kalibratie	Yes
Microtouch-sensor	Yes
ESD veilig	Yes
Informatie	
Inhoud van de verpakking	Microscope, Carry pouch, software CD, user manual, quick guide, calibration target, front cover box
Garantie-informatie	2 years European warranty
Regelgevende goedkeuring	CE, FCC, ROHS
Prijsklasse	€1000,00 - €1200,00

Product galerij



Dino-Lite
Built in Axial Illumination

